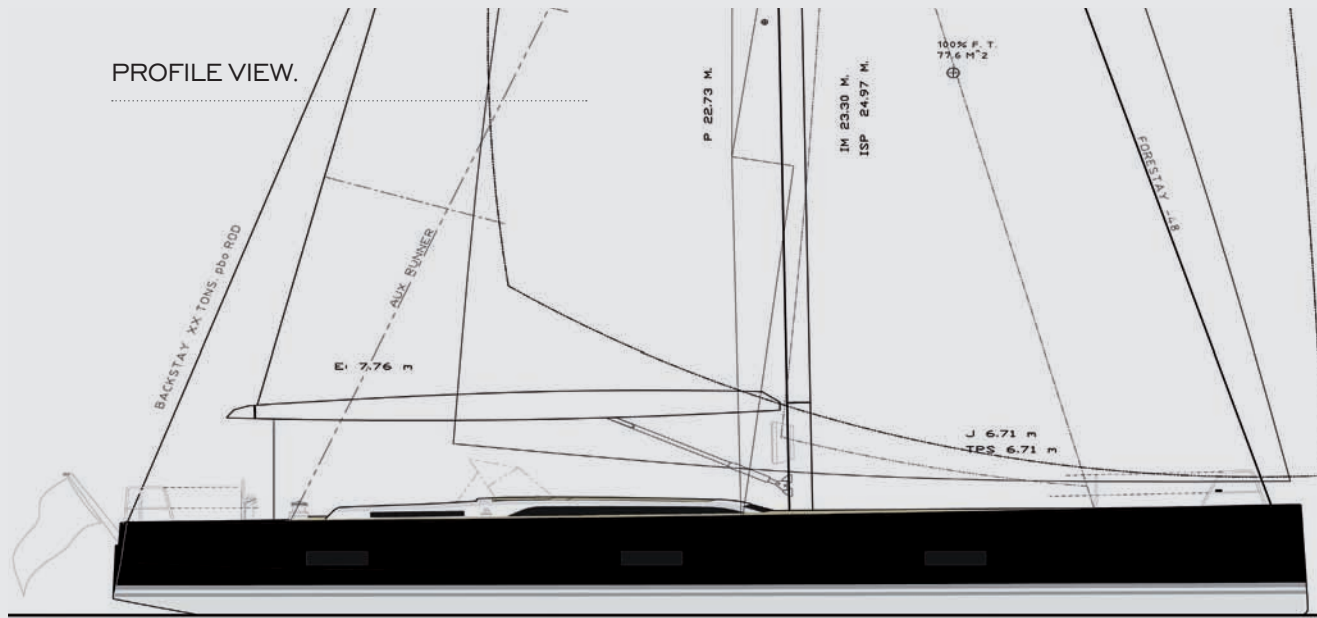


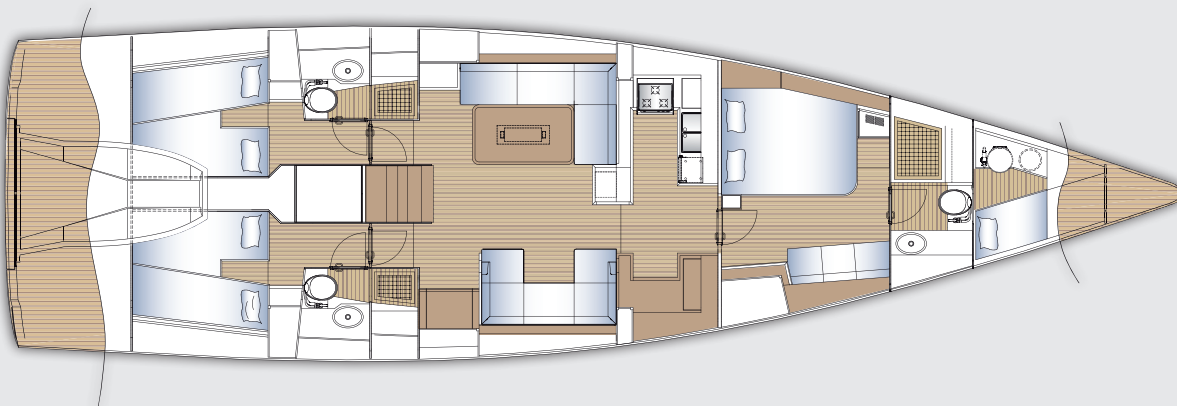
PROFILE VIEW.



DECK PLAN.



INTERIOR PLAN.



## SOLARIS 58'

LOA	17.40 M
LWL	16.00 M
BEAM	5.05 M
DRAFT	3.20 - (2.85 OPTIONAL) M
DISPLACEMENT	19.500 KG
BALLAST	6.800 KG
SAIL AREA	188 M <sup>2</sup>
GENOA 106%	90 M <sup>2</sup>
MAINSAIL	98 M <sup>2</sup>
ENGINE	VOLVO PENTA SD 75 (110 OR 150 OPTIONAL) HP
WATER TANK	700 L
FUEL TANK	500 L
CE CERTIFICATION	GERMANISCHER LLOYD OFFSHORE A
DESIGNER	JAVIER SOTO ACEBAL
INTERIOR AND STRUCTURAL	SOLARIS DESIGN TEAM